

# Communities Commissioning

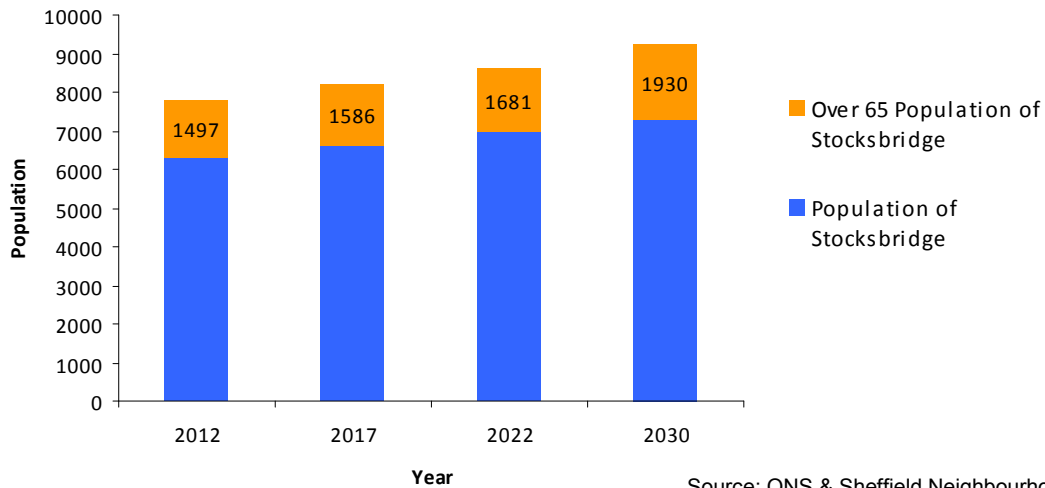
## Ward Profile: Stocksbridge Older People

July 2012

## Population

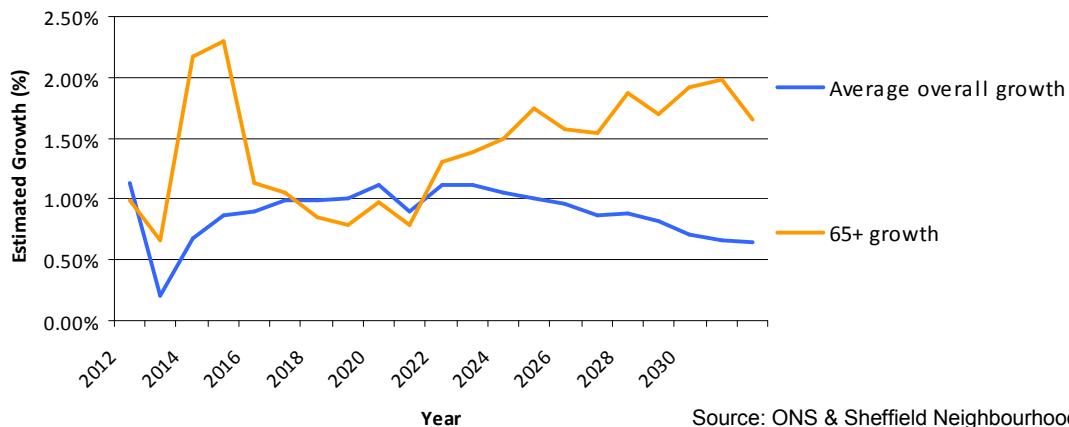
The chart below shows the current estimate and projected growth in the population of Stocksbridge over the next 18 years. The over 65 age group has been highlighted separately. These estimates are based on the Office for National Statistics projections for growth in the Sheffield population in future years.

Projected growth of the population of Stocksbridge



Source: ONS & Sheffield Neighbourhood Health Profile 2008/09

Projected growth of the 65+ age group in the Stocksbridge area compared against the estimated growth of the total population of the Stocksbridge area



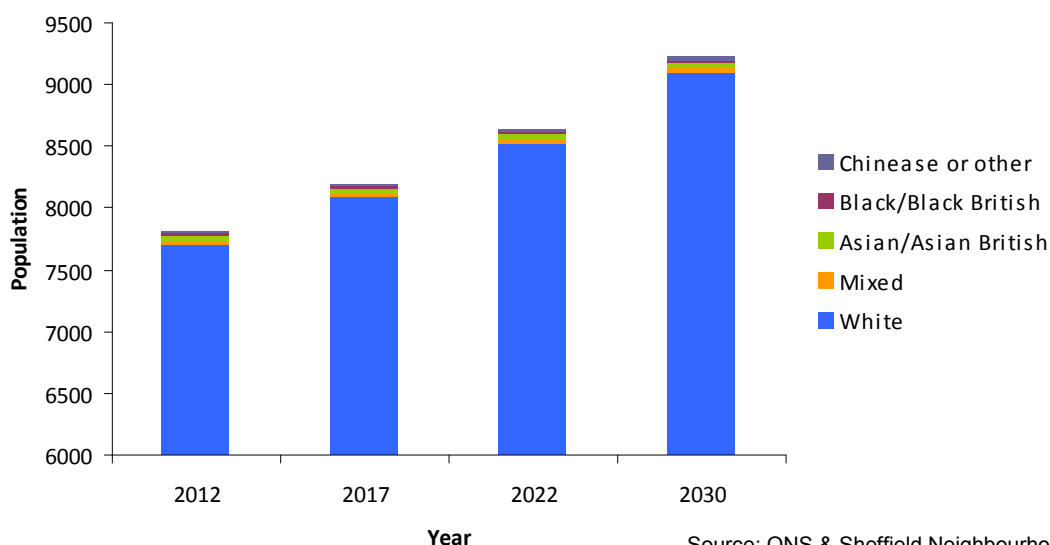
Source: ONS & Sheffield Neighbourhood Health Profile 2008/09

The chart above highlights the change in the rate of growth between the 65+ age group and the total population of Stocksbridge. As can be seen through the chart, projections indicate that growth in the 65+ age group will initially jump ahead of that of the average growth (primarily due to a projected 5% – 6% growth in the 65 – 69 age group), but from 2020 onwards the 65+ population is projected to grow at a rate ahead of the total population in Stocksbridge.

## Ethnicity

The Chart below shows the current estimate and projected growth in the population of Stocksbridge over the next 18 years by ethnic group.

Projected growth of the population of Stocksbridge by ethnicity

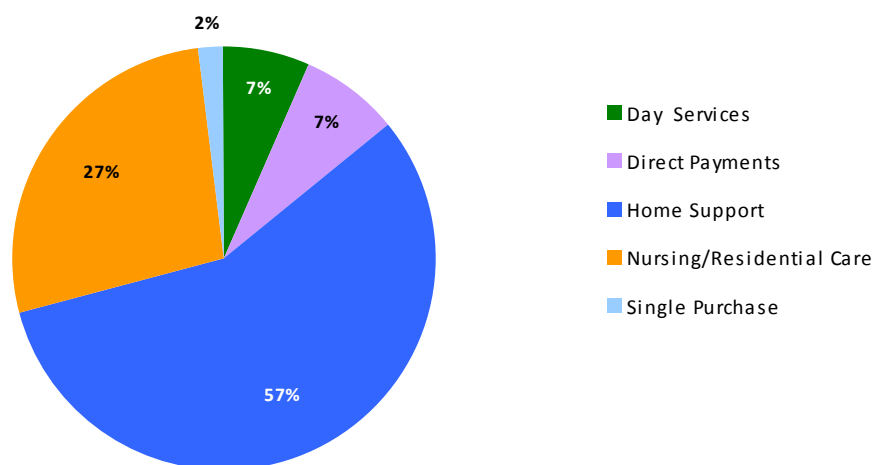


Source: ONS & Sheffield Neighbourhood Health Profile 2008/09

## Older People

The chart and accompanying table below shows the usage of Sheffield City Council services by the 65+ age group in the Stockbridge area.

Service Usage for 65+ age group in the Stocksbridge Area

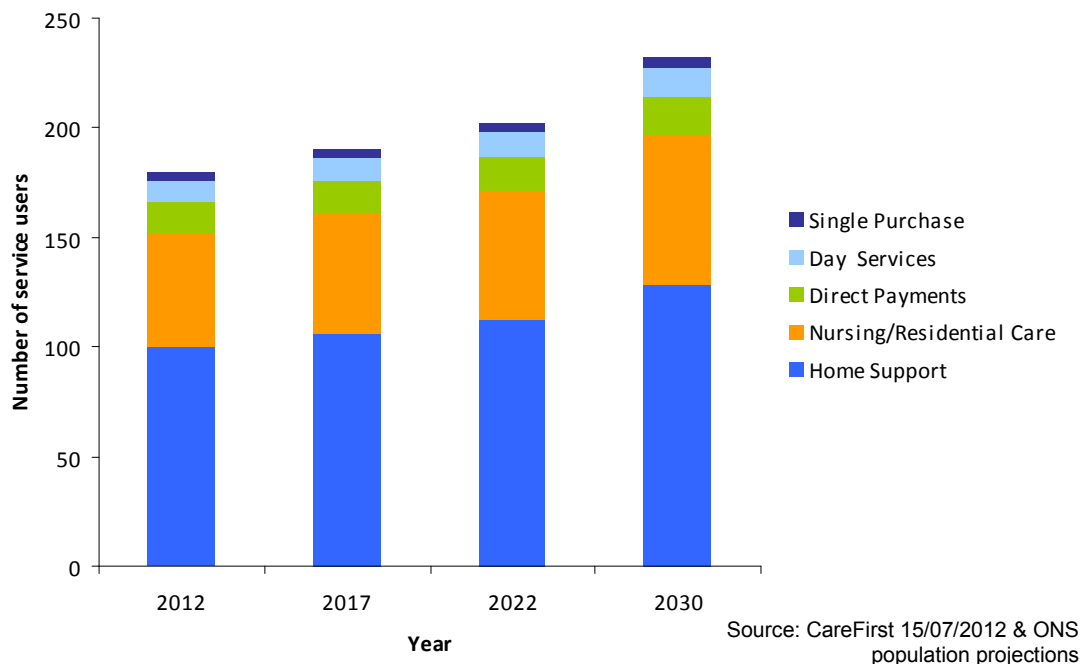


Source: CareFirst 15/07/2012

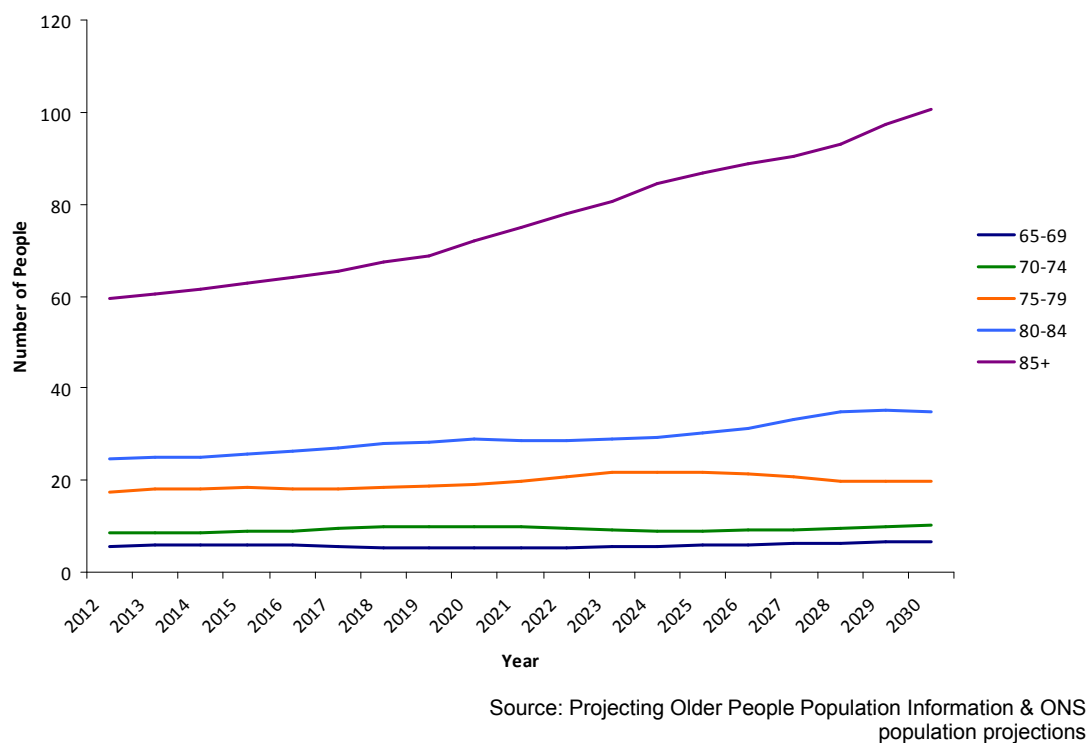
Service Types	Number of Service Users
Day Services	10
Direct Payments	14
Home Support	100
Nursing/Residential Care	51
Single Purchase	4
Grand Total	192

Source: CareFirst 15/07/2012

The chart below shows a projected usage of adult social care services in Stocksbridge over the next 18 years.



The Chart below shows the current estimate and projected growth in prevalence of Dementia in the population of Stocksbridge over the next 18 years.



The Sheffield Help Yourself is an online directory of community groups, support groups, health and social care organisations in Sheffield. It can be used to help plan your care and support and find home care/home support, residential care, respite care, lunch clubs and support if you receive an individual budget or direct payment.

The following table shows a few of the support options that are available in the Stocksbridge area. Please go to the link below to search for further options.

<b>Assistance Type</b>	<b>Number of providers</b>
Home Support	68
Day Care	4
Transport	7
Supported Living	6
Support Planning	9
Respite Care	21
Personal Assistant Recruitment	10
Palliative Care	3
Nursing	5
Managing Direct Payment Budgets	9
Lunch Clubs	3
Day Centre	4
Brokerage for Direct Payment Holders	3
Befriending	35
Advocacy	4

Sheffield Help Yourself database

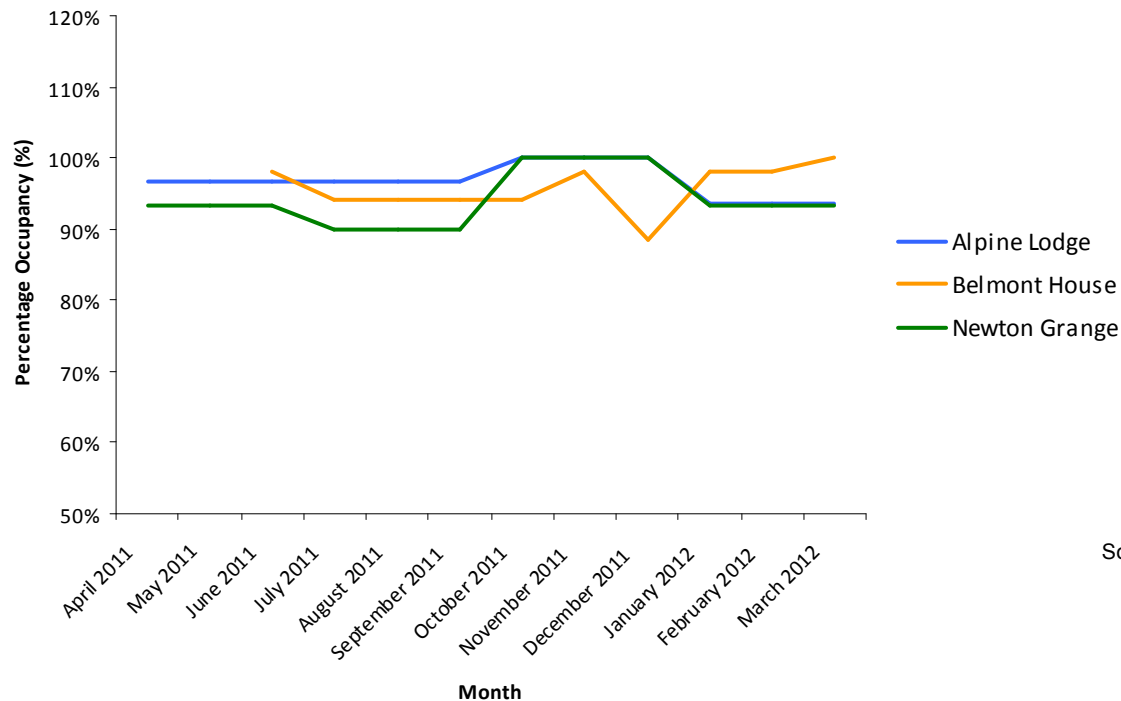
[www.sheffieldhelpyourself.org.uk](http://www.sheffieldhelpyourself.org.uk)

## Care Homes

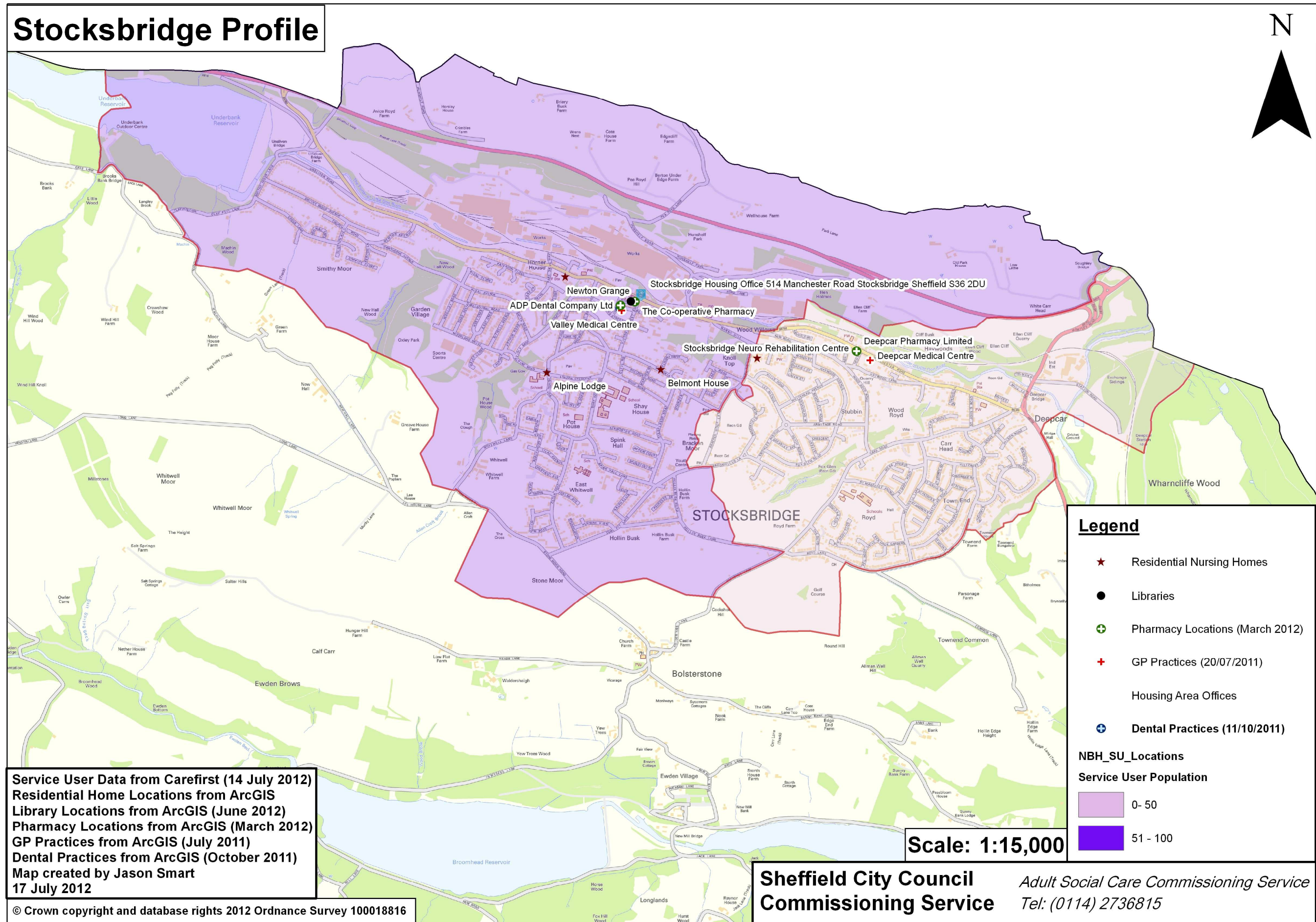
The table below identifies the current care homes within the Stocksbridge area, as well as their capacity and the clients that they can facilitate.

Name of Care Home	Postcode	Ward	Ward Name	Capacity	CQC type	Specialism's/Services
Belmont House	S36 1AH	16	Stocksbridge	52	Care home with nursing, Care home without nursing	Dementia, Diagnostic and/or screening services, Mental health conditions, Physical disabilities, Caring for adults over 65 yrs, Caring for people whose rights are restricted under the Mental Health Act
Newton Grange Care Home	S36 1LN	16	Stocksbridge	30	Care home without nursing	
Alpine Lodge	S36 1AD	16	Stocksbridge	61	Care home with nursing	Dementia, Diagnostic and/or screening services, Mental health conditions, Physical disabilities, Caring for adults over 65 yrs

The chart below is based on information reported by the care homes. It shows the reported occupancy that the care homes experienced over the last reported year.



Source: Quarterly Monitoring Returns 2011 - 2012



This page is intentionally left blank